

# Agritourism Activities

at 22053 Highland St, Wildomar, CA

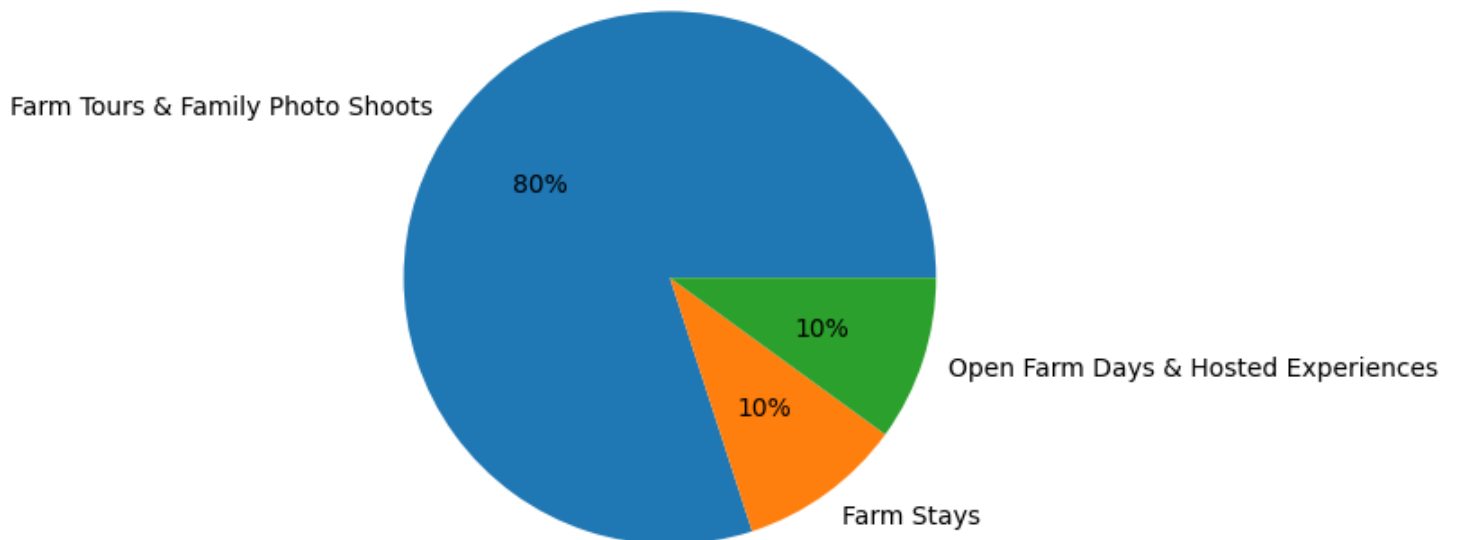


## Agritourism Activities

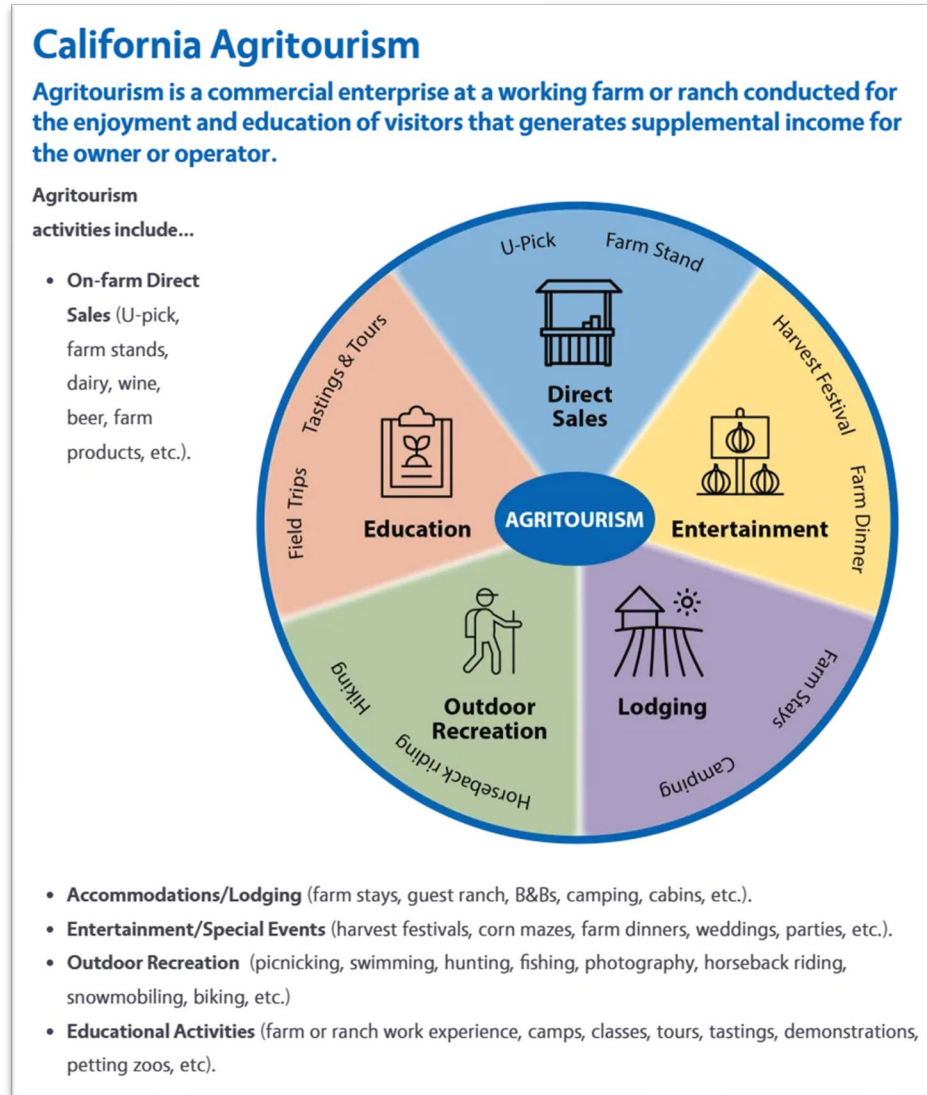
We are a specialty micro and miniature Highland cow farm, one of thousands of similar small farms across the US offering farm experiences to the community. In our national “Miniature Highland and Highpark Farmers” group alone, there are several hundred members offering essentially the same types of experiences as we do.

Our core agritourism services is **private farm tours** and “**mini cow cuddling,**” providing calm, recreational moments with our specially trained micro and miniature cows, photo opportunities, and milestone celebrations — all personally facilitated by us.

Howe Ranch Experience Breakdown



Our farm business, **Howe Ranch**, has seasonally offered many of the experiences and services that are considered part of the 5 core services offered by farms in the agritourism industry, as outlined by the University of California Regents, the entity that provides the framework for the programs in California ([California Agritourism](https://ucanr.edu/site/california-agritourism)):



Reference: <https://ucanr.edu/site/california-agritourism>

Howe Ranch Agritourism:

1. **Direct Sales:** Guests can support the farm by purchasing organic duck and chicken eggs, fresh rosemary and fresh fruit from our market stand. Sourced from our small orchard: pink grapefruit year- round,

apricot and champagne grape in the summer and an abundance of rosemary are our primary goods; additionally we offer branded merch to support veterinary care.



2. **Farm Stays (Accommodations/Lodging):** We have in the past offered private farm experiences branded as “Farmer for a Day” for out of town families in partnership with HipCamp and Airbnb. Visitors learn about breeding and raising livestock and participate in animal care routines in the evening and in the morning, with the option of adding an overnight farm stay: Guests stay either in their RV parked near the animal barn, in their tent set up in a pre-designated spot on the sand track, or in a guest suite within the farmhouse. They enjoy amenities such as shaded picnic tables, games, and a fire pit in the large sand track area, and have use of an outdoor kitchen with a propane stove under the metal pavilion. Restroom facilities are available in the barn.

We have also hosted discreet private stays for notable figures during the week.

We offer a visitor guide and send our guests to patronize local establishments and other local favorites, as well as a host of recreational activities.

Our Hipcamp listing with reviews and photos: [Farmer for a Day Stay at Howe Ranch’s Barn Site](#)



Media:




**Petting Zoo Camp**

**Site Map**

1. Camping Spots
2. Camp Parking
3. Pavilion with Outdoor Kitchen
4. Picnic Tables
5. Restroom
6. Club Room (Access from Pool Area)
7. Hot Tub & Pool
8. Bistro (Sliding Door Access)
9. Animal Barn
10. Goat Hill
11. Cow Pasture
12. Donkey Corral

Scan for the Petting Zoo Camp Site Map:



[thehoweranch.com](http://thehoweranch.com)



3. **Entertainment/Special Events:** We host several Open Farm Days around the seasonal holidays, welcoming the community of mini cow lovers to enjoy our seasonally decorated farm. These two-hour experiences feature tours of the animal pens, petting zoo types of animal encounters with young animals, family games (lasso/cornhole/egg and spoon race, etc), a scavenger hunt, and a mixer that encourages guests in our mini cow enthusiasts community to connect with each other. In addition, we offer our spaces through partnerships with Peerspace and Swimply for private, small-scale, rustic outdoor gatherings such as group meetings, birthday parties, team-building events, and milestone celebrations, including intimate weddings—all thoughtfully curated and hosted by us. These opportunities cater to the growing need among families, especially those who manage anxiety, stress, and family members on the spectrum, to step away from daily challenges and reconnect with simple, back-to-basics experiences. Each experience includes educational components on animal husbandry and sustainability. Guests can support the farm by obtaining a “pass” or, in lieu of the pass, bring a bale of hay. By incorporating farm animal encounters, we give guests the opportunity to slow down, engage with nature and agriculture, and truly live in the moment.

Visitors travel as far as from Northern California and Las Vegas to enjoy a couple of hours at the farm.



## Infrastructure, Safety & Liability Considerations:

**Parking:** At our current location on 3.81 acres we have 20 paved parking spots, and a large equestrian/rodeo track on the property that provides a large parking area at 245 ft long and 68 ft wide with gates and signs on each side for flow—accommodating parking of another 50 cars. (Photo: typical parking use during an Open Farm Experience ~ 25 families)



**Noise:** Noise is not heard past our property line of our plot that is 35% surrounded by wilderness, and 25% by our private street and our neighbor's private motocross track, and our other neighbor's window covering business. We don't permit any person on the property to make noise of any kind past 9:00 PM during the week, and 10:00 PM on Friday and Saturday in respect of stress levels in animals and humans alike. We maintain good relations with our neighbors. Our neighbors have regular visitor traffic on their large lots, themselves, and we all respect each other's' privacy and activities.

Visitors agree to read and follow guidelines and notices that are posted on our website, on our property, and in email communication once they have registered and signed the visitor waiver electronically. All visitors to our farm must agree to several regulatory notices guests must agree to in order to visit Howe Ranch, all of which are posted on the front page of our website, TheHoweRanch.com.

**Property Rules and Regulatory Notices (Front Page of TheHoweRanch.com):**

[Private Property Notice](#)

[Preparing for Your Visit & Policies](#)

[Farm Gathering Rules](#)

[Visitor Waiver](#)

Additional guidelines and regulations are posted on our website.

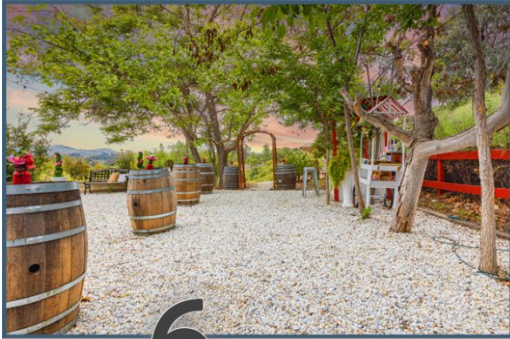
**Insurance:** We carry \$1,000,000 liability and \$1,000,000 personal insurance through Farmers Insurance.

**Sanitation:** We have up to three restrooms and handwash stations available, with wheelchair accessible options.

**Safety:** We are First Aid, AED, CPR trained. We have mandated and coordinated contracting of additional safety staff onsite during some of our small gatherings, including life guard and security/safety personnel, depending on need as determined by our facility's safety guidelines.

# Property Map

## HOWE RANCH SITE MAP



6



7



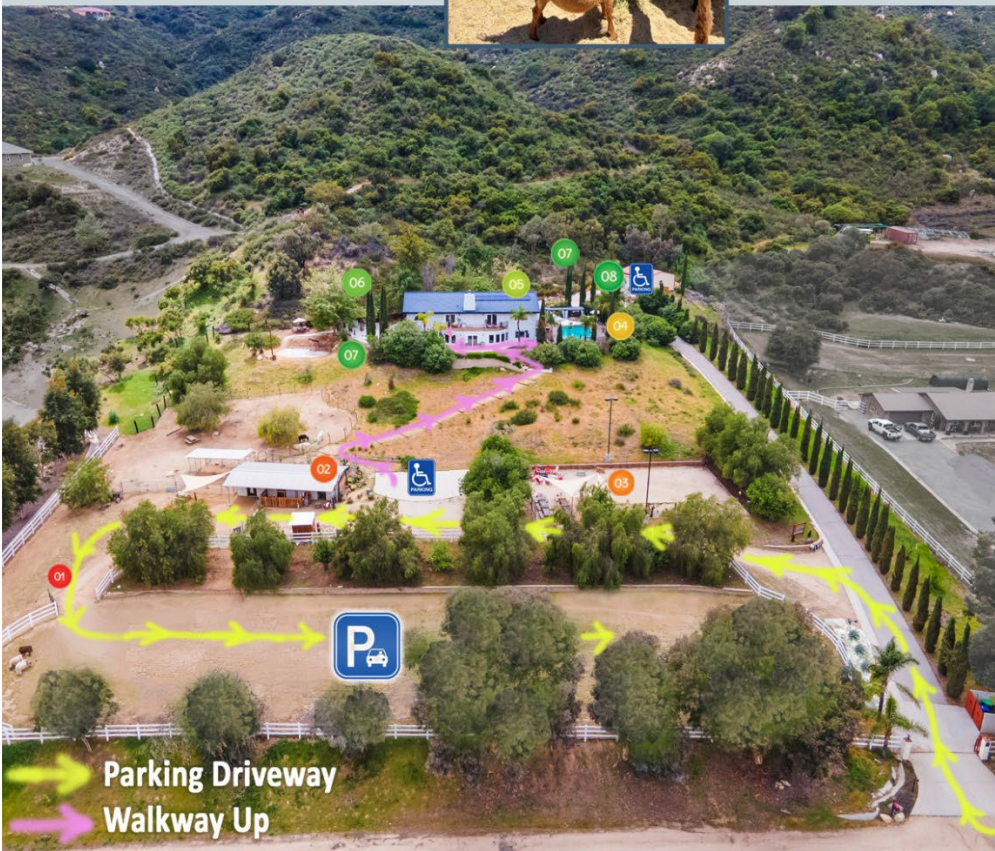
3



3



4



1. Parking Lot Entrance
  2. Animal Barn & Restroom
  3. Barnyard & Sand Court  
Petting Zoo Experience with Mini Cows,  
Alpacas & Mini Goats
  4. Sunset Sanctuary: Valley Views and  
Pool Lounge
  5. Restroom #2 (from Clubroom)
  6. Highland Vista
  7. The Plaza
  8. Walkway to Parking Lot
1. Parking Lot Exit: As you entered

15 Mph Speed Limit in Neighborhood



22053 Highland St.  
Wildomar, Ca 92595

Parking Driveway  
Walkway Up